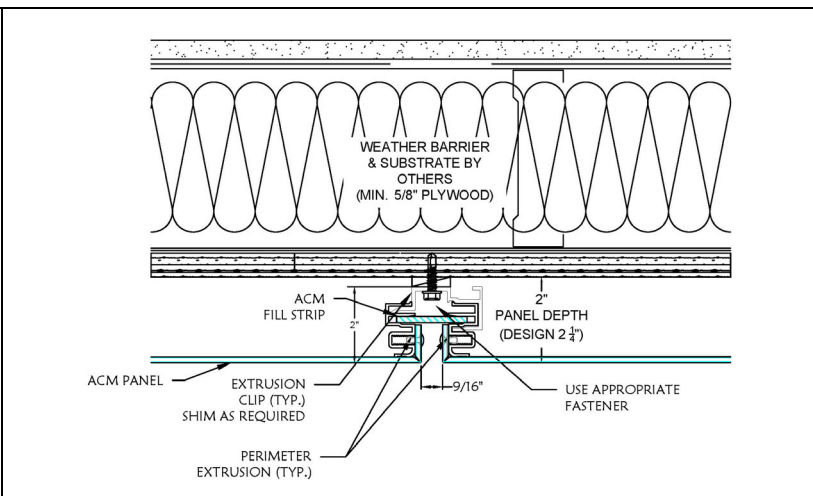
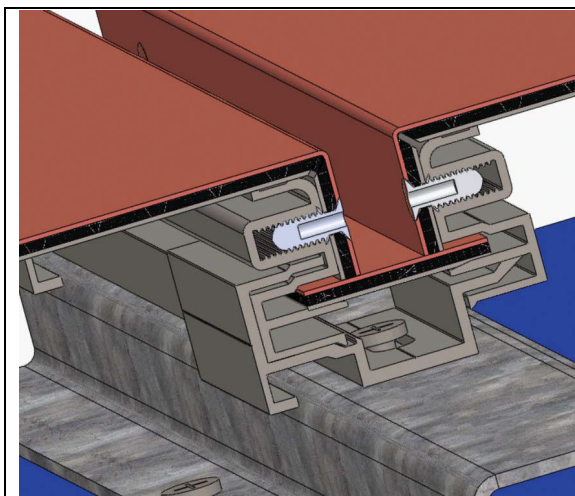


PRODUCT DATA SHEET

[RETURN TO WEB](#)

Division 7 is one of the first accredited fabricators of the Fusion Drill Free™ extrusion system in the United States. The D7-FUSION is a route and return aluminum composite panel system using the Fusion Drill Free™ extrusions and color matched fill strips in the reveals. The system uses custom extruded aluminum framing and pre-drilled wall mounted clips, integral to the frame extrusions, for a secure attachment to your substrate. It is designed to speed fabrication and provide a user-friendly installation. This system has been independently tested and meets the highest standards in the industry.

D7-FUSION Features and Information:	
System:	Progressive Installation
Joint Type	Dry Joint with 9/16" reveal and Filler Strips matching panel colors
Underlayment	Waterproofing Weather Barrier Required
Required Substrate	System is designed to your required substrate specifications and must be waterproofed prior to installation.
Radius Surfaces	YES, using our Micro Seam fabrication method
System Depth	2" Minimum – 2-1/4" Design
Tested Certifications	ASTM E283, E331, E330, E1233, AAMA 501, 508 and NFPA 285
Required Maintenance	Minimal : Clean with low pressure water and mild detergents
Thermal Expansion	YES
Price	Ranges with complexity of the project
Weather Sealed	NO
Installation Rating	Easy



<p>Material Manufacturers:</p> <p>Alpolic (Mitsubishi Plastics) Larson (Alucoil) Vitrabond (Fairview Architectural) AlFrex FR Alucobond (3A Composites) Reynobond (Alcoa) See Manufacturer for product technical specifications, finish and color options available.</p>	<p>Base Material Sizing:</p> <p>Standard Panel Sizes: 50" x 196" Maximum Panel Height 48" 62" x 196" Maximum Panel Height 60" Custom Sizes also available PE Core = Polyethylene FR Core = Fire Rated (Mineral)</p>
<p>Material Thickness:</p> <p>4mm (.157") Standard</p>	<p>Panel Extrusions: FUSION DRILL FREE™ Aluminum Alloy: 6063-T6 Finish</p>
<p>System Depth:</p> <p>2" Minimum - Design 2-1/4" Custom System Depths Available</p>	<p>Fabrication Tolerances:</p> <p>Width: 0.02" nominal Length: 0.02" nominal Panel Depth: 0.02" nominal Square: 0.02" nominal</p>
<p>Reveal Width:</p> <p>9/16" Standard Custom Reveals Available</p>	<p>Performance Testing:</p> <p>ASTM E 283 - Static Air Infiltration ASTM E331 - Static Water Infiltration ASTM E330 - Structural Design Loads (40psf) ASTM E 123.3 - Cyclic Air Pressure Differential AAMA 501 - Dynamic Water Infiltration AAMA 508 - Pressure Equalization & Water Infiltration NFPA 285 - Test Method for Fire Propagation Characteristics (FR Core)</p>