

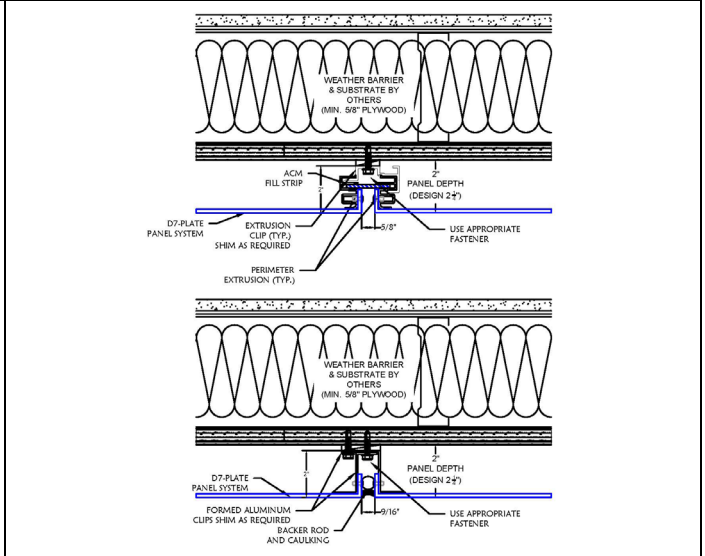
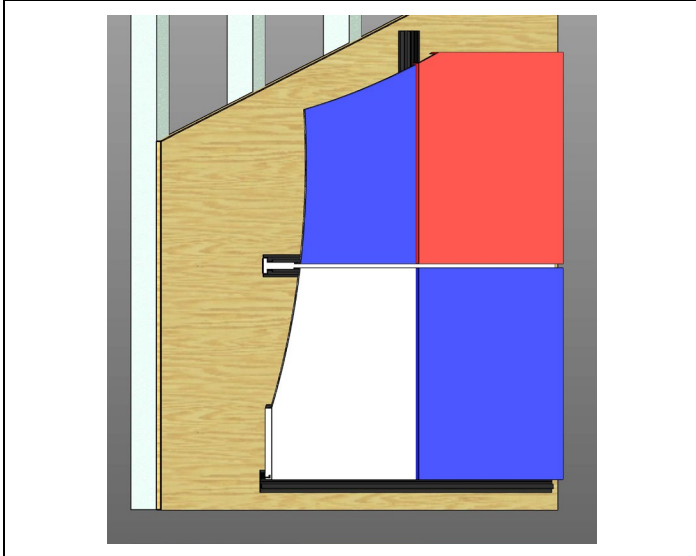
**PRODUCT DATA SHEET**

[RETURN TO WEB](#)

The D7-PLATE is a single skin, formed aluminum panel system that uses either matching color fill strips or caulking between the panels. This design allows us to provide a solid formed, finished look. The system is available in a wide variety of prefinished colors or can be post painted to match your requirements. We are capable of welding archways, radius formations, and almost any shape the buildings' structure may take. The system uses extruded aluminum framing (Fusion Drill Free™) and wall mounted clips for a secure attachment to your substrate. If you want a truly custom and sturdy façade, choose the D7-PLATE. This system has been independently tested and meets the highest standards in the industry.

**D7-PLATE Features and Information:**

<b>System:</b>	Progressive Installation
<b>Joint Type</b>	Dry Joint with 5/8" reveal with Fill Strips Wet Joint with 5/8" reveal and sealant
<b>Underlayment</b>	Waterproofing Weather Barrier Required
<b>Required Substrate</b>	System is designed to your substrate specifications and if for exterior use, must be waterproofed prior to installation.
<b>Radius Surfaces</b>	YES, fully welded during the fabrication process
<b>System Depth</b>	2" Minimum – 2-1/4" Design Custom Depths Available
<b>Tested Certifications</b>	ASTM E283, E331, E330, E1233, AAMA 501, 508 and NFPA 285
<b>Required Maintenance</b>	Minimal : Clean with low pressure water and mild detergents
<b>Thermal Expansion</b>	YES
<b>Price</b>	Ranges with complexity of the project
<b>Weather Sealed</b>	NO
<b>Installation Rating</b>	Easy – Difficult depending on complexity of panels and substrate



<p><b>Material Thickness:</b></p> <p>1/8", .090", .080", .063"* Sheet Aluminum 5005 for post paint and anodizing</p>	<p><b>Base Material Sizing:</b></p> <p>48" x 120" 60" x 120" 60" x 144" Custom Sizes also available</p>
<p><b>System Depth:</b></p> <p>2" Minimum - Design 2-1/4" Custom Systems Available</p>	<p><b>Panel Extrusions:</b> <b>FUSION DRILL FREE™</b> Aluminum Alloy: 6063-T6 Finish .080" 3003 Shop Formed Clips</p>
<p><b>Reveal Width:</b></p> <p>5/8" Standard Customer Systems Available</p>	<p><b>Fabrication Tolerances:</b></p> <p>Width: 0.02" nominal Length: 0.02" nominal Panel Depth: 0.02" nominal Square: 0.02" nominal</p>
	<p><b>Performance Testing:</b></p> <p>ASTM E 283 - Static Air Infiltration ASTM E331 - Static Water Infiltration ASTM E330 - Structural Design Loads ASTM E 123.3 - Cyclic Air Pressure Differential AAMA 501 - Dynamic Water Infiltration AAMA 508 - Pressure Equalization &amp; Water Infiltration NFPA 285 - Test Method for Fire Propagation Characteristics</p>