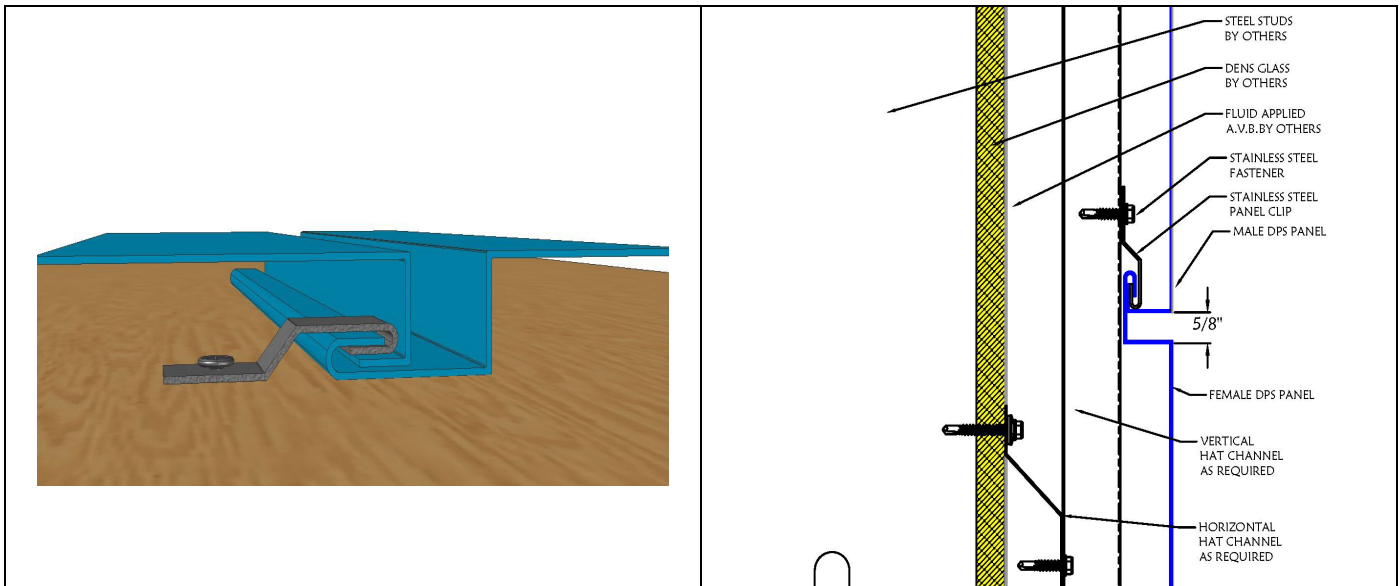


The D7-DPS is a single skin reveal panel system available in variable system depths. This system can be fabricated in depths from 1" up to 3" deep. We have incorporated specialized joinery into each panel providing a trouble-free installation. The DPS system is available in a wide variety of colors. This system has been independently tested and meets the highest standards in the industry.

D7-DPS Features and Information:

System:	Progressive Installation
Joint Type	5/8" reveal standard – Custom sizes available
Underlayment	Waterproofing Weather Barrier Required
Required Substrate	System is designed to your substrate specification and must be waterproofed prior to installation
Radius Surfaces	NO
System Depth	1" Minimum – 3" Maximum
Tested Certifications	ASTM E330, E283 and E331, AAMA 501.1
Required Maintenance	Minimal : Clean with low pressure water and mild detergents
Thermal Expansion	YES
Price	Ranges with complexity of the project
Weather Sealed	NO
Installation Rating	Medium



<p>Material Manufacturers:</p> <p>Most Manufacturers of Aluminum Sheet Goods</p>	<p>Base Material Sizing:</p> <p>48" x 120" Custom Sizes also available</p>
<p>Material Thickness:</p> <p>.050" Pre-Coated Aluminum .063" Pre-Coated Aluminum .080" Pre-Coated Aluminum (mill finish products available for post painting)</p>	<p>Reveal Width:</p> <p>5/8" Standard Custom Systems Available</p>
<p>System Depth:</p> <p>1" Minimum - 3" Maximum Custom Systems Available</p>	<p>Fabrication Tolerances:</p> <p>Width: 0.02" nominal Length: 0.02" nominal Panel Depth: 0.02" nominal Square: 0.02" nominal</p>
<p>Performance Testing:</p>	<p>ASTM E330 PRELOAD, STRUCTURAL DESIGN LOAD AND STRUCTURAL PROOF LOAD ASTM E283 STATIC AIR INFILTRATION ASTM E331 STATIC WATER INFILTRATION AAMA 501.1 DYNAMIC WATER INFILTRATION</p>