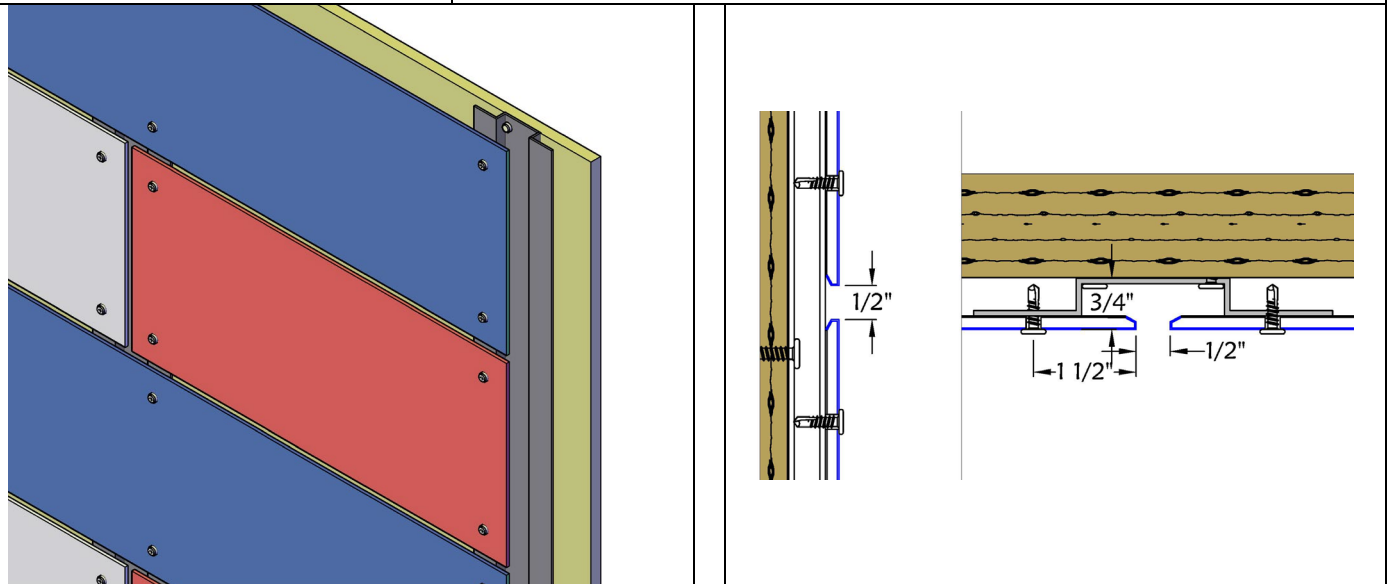


PRODUCT DATA SHEET

[RETURN TO WEB](#)

Do you desire a unique look for any interior or exterior facade? The D7-EDGE system is for you! This system uses any color of Aluminum Composite Material and our special perimeter treatments. The perimeter treatment folds over the finished side of the material to conceal the visible core of the panel. Using a black or custom color mounting frame and painted to match or stainless-steel fasteners, the D7-EDGE provides an easy to install, esthetically pleasing façade. The system has been independently tested and meets the highest standards of the industry.

D7-EDGE Features and Information:	
System:	Non-Progressive Installation
Standard Reveal	Open 1/2" reveal showing mounting system (black)
Underlayment	Exterior - Waterproofing Weather Barrier Required (black suggested)
Required Substrate	System is designed to your substrate specifications and if for exterior use, must be waterproofed prior to installation. Black substrate suggested.
Radius Surfaces	Panels can be segmented around a radius
System Depth	1-1/2"
Tested Certifications	ASTM E283, E331, E330, E1233 and AAMA 501
Required Maintenance	Minimal : Clean with low pressure water and mild detergents
Thermal Expansion	YES
Price	Ranges with complexity of the project
Weather Sealed	NO
Installation Rating	Easy



<p>Material Manufacturers:</p> <p>Alpolic FR (Mitsubishi Plastics) Alucobond PLUS (3A Composites) Alrex Reynobond (Alcoa) See Manufacturer for product technical specifications, finish, and color options available.</p>	<p>Base Material Sizing:</p> <p>50" x 196" 62" x 196" Standard Custom Sizes also available PE Core = Polyethylene FR Core = Fire Rated (Mineral)</p>
<p>Material Thickness:</p> <p>4mm (.157") Standard</p>	<p>Mounting System:</p> <p>5005 Aluminum formed hat channels</p>
<p>System Depth:</p> <p>3/4" – 1-1/2" Custom Systems Available</p>	<p>Fabrication Tolerances:</p> <p>Width: 0.02" nominal Length: 0.02" nominal Panel Depth: 0.02" nominal Square: 0.02" nominal</p>
<p>Standard Reveal:</p> <p>1/2" Standard Customer Systems Available</p>	<p>Performance Testing:</p> <p>ASTM E 283 - Static Air Infiltration ASTM E331 - Static Water Infiltration ASTM E330 - Structural Design Loads (40psf) ASTM E 1233 - Cyclic Air Pressure Differential AAMA 501 - Dynamic Water Infiltration</p>